

Prepared in cooperation with the Massachusetts Department of Environmental Protection

User Guide for the Massachusetts Sustainable-Yield Estimator (MA SYE—Version 2.0) Computer Program

Open-File Report 2018–1169

User Guide for the Massachusetts Sustainable-Yield Estimator (MA SYE—Version 2.0) Computer Program

By Gregory E. Granato and Sara B. Levin

Prepared in cooperation with the
Massachusetts Department of Environmental Protection

Open-File Report 2018–1169

U.S. Department of the Interior
U.S. Geological Survey

U.S. Department of the Interior
RYAN K. ZINKE, Secretary

U.S. Geological Survey
James F. Reilly II, Director

U.S. Geological Survey, Reston, Virginia: 2018

For more information on the USGS—the Federal source for science about the Earth, its natural and living resources, natural hazards, and the environment—visit <https://www.usgs.gov> or call 1–888–ASK–USGS.

For an overview of USGS information products, including maps, imagery, and publications, visit <https://store.usgs.gov>.

Any use of trade, firm, or product names is for descriptive purposes only and does not imply endorsement by the U.S. Government.

Although this information product, for the most part, is in the public domain, it also may contain copyrighted materials as noted in the text. Permission to reproduce copyrighted items must be secured from the copyright owner.

Suggested citation:

Granato, G.E., and Levin, S.B., 2018, User guide for the Massachusetts Sustainable-Yield Estimator (MA SYE—version 2.0) computer program: U.S. Geological Survey Open-File Report 2018–1169, 7 p., <https://doi.org/10.3133/ofr20181169>.

ISSN 2331-1258 (online)

Acknowledgments

This report and the accompanying software were developed by the U.S. Geological Survey (USGS) in cooperation with the Massachusetts Department of Environmental Protection (MA DEP). Richard Friend and Julie Butler of the MA DEP and Viki Zoltay of the Massachusetts Department of Conservation and Recreation beta-tested the Massachusetts Sustainable-Yield Estimator (MA SYE) version 2.0 software and provided questions and comments that improved the software and this manual. Elizabeth Ahearn, Scott Olson, and Tomas Smieszek of the USGS helped beta-test the software and provided questions and comments that improved it. Jeffrey Barbaro, Tomas Smieszek, Marla Stuckey, Jonas Casey-Williams, Peter Weiskel, Matt Ely, and Kevin Breen provided technical and editorial reviews that improved this report.

Contents

Acknowledgments	iii
Abstract	1
Introduction.....	1
Analytical Methods	2
The Graphical User Interface	2
Program Inputs.....	3
Program Outputs.....	5
The Microsoft Access Database Application.....	6
References Cited.....	6

Figures

1. Flowchart showing the sequence for navigating through the graphical user interface of the Massachusetts Sustainable-Yield Estimator (version 2.0) to import data, specify flow targets, and calculate flow durations, flow records, yields, and output statistics for unaltered flow and water-use-adjusted streamflows2
2. Screen capture showing the detailed information available to the user on an example form within the Massachusetts Sustainable-Yield Estimator, version 2.0.....4

Tables

1. Summary of basin-property variables for input into the Massachusetts Sustainable-Yield Estimator, version 2.0.....5
2. Summary of options for data output from the Massachusetts Sustainable-Yield Estimator, version 2.05

Conversion Factors

U.S. customary units to International System of Units

Multiply	By	To obtain
inch (in.)	2.54	centimeter (cm)
foot (ft)	0.3048	meter (m)
square mile (mi ²)	2.590	square kilometer (km ²)

Temperature in degrees Celsius (°C) may be converted to degrees Fahrenheit (°F) as
 $^{\circ}\text{F} = (1.8 \times ^{\circ}\text{C}) + 32$.

Temperature in degrees Fahrenheit (°F) may be converted to degrees Celsius (°C) as
 $^{\circ}\text{C} = (^{\circ}\text{F} - 32) / 1.8$.

Abbreviations

CSV	comma-separated values
GUI	graphical user interface
HyDroDSS	hydrologic drought decision support system
MA SYE	Massachusetts Sustainable-Yield Estimator
USGS	U.S. Geological Survey
v2.0	version 2.0
VBA	Visual Basic for Applications

User Guide for the Massachusetts Sustainable-Yield Estimator (MA SYE—Version 2.0) Computer Program

By Gregory E. Granato and Sara B. Levin

Abstract

This report is a user guide for the Massachusetts Sustainable-Yield Estimator (MA SYE) computer program (version 2.0). The MA SYE was developed by the U.S. Geological Survey in cooperation with the Massachusetts Department of Environmental Protection to provide a planning-level decision-support tool designed to help decision makers estimate daily mean streamflows and selected streamflow statistics to assess sustainable water use at ungaged sites in Massachusetts. The MA SYE provides estimates of unaltered streamflow (which is assumed to occur in the absence of any water withdrawals or wastewater discharges and with minimal human development), net streamflow alterations caused by water use, water-use-adjusted streamflow, streamflow yields (estimated unaltered streamflow minus user-defined flow targets), and estimates of the accuracy and uncertainty of estimated unaltered streamflow. The MA SYE uses basin characteristics and water-use volumes (water withdrawals and wastewater-return flows) obtained from the U.S. Geological Survey online StreamStats application to estimate the unaltered and water-use-adjusted streamflows. The MA SYE is a database application with a graphical user interface developed by using Visual Basic for Applications with the 32-bit version of Microsoft Access. The graphical user interface is designed to include full documentation for users: an introductory instruction form and onscreen help within each interactive form, including explanation buttons, context-sensitive help buttons, and tool-tip and status-bar messages.

Introduction

Sustainable water-use estimator tools provide planning-level estimates of streamflow at a selected site and the potential effects of water use on that streamflow (Archfield and others, 2010; Levin and Granato, 2018). This information is needed to help decision makers balance human water needs with the instream flows needed to sustain healthy ecosystems. The Massachusetts Sustainable-Yield Estimator

(MA SYE) computer program was developed by the U.S. Geological Survey (USGS) in cooperation with the Massachusetts Department of Environmental Protection to provide a planning-level decision-support tool designed to help decision makers estimate daily mean streamflows and selected streamflow statistics to assess sustainable water use at ungaged sites in Massachusetts (Granato and Levin, 2018). Planning-level estimates commonly are defined as the results of analyses used to evaluate broad policy measures or alternative management measures; planning-level estimates are recognized as including substantial uncertainties (commonly orders of magnitude) in all aspects of the decision process (Barnwell and Krenkel, 1982; Granato, 2013, 2014). The MA SYE provides estimates of unaltered streamflow (unaltered streamflow is the estimated daily mean streamflow in a drainage basin in the absence of any water withdrawals or wastewater discharges and with minimal human development), net streamflow alterations caused by water use, water-use-adjusted streamflow, streamflow yields (estimated unaltered streamflow minus user-defined flow targets), and estimates of the accuracy and uncertainty of estimated unaltered streamflow. The MA SYE uses basin characteristics and water-use volumes obtained from the USGS online StreamStats application (Ries and others, 2017; <https://water.usgs.gov/osw/streamstats/>) to estimate the unaltered and water-use-adjusted streamflows; the user must first run the StreamStats application to get the data and then run the MA SYE to use the data.

This report is a guide to describe the implementation and use of the MA SYE computer program (Granato and Levin, 2018), which is available on the USGS ScienceBase-Catalog website (<https://doi.org/10.5066/P95VX5AX>). The theory and application of methods of estimating streamflow and sustainable water use are described by Levin and Granato (2018). This user guide provides brief overviews of the numerical methods, graphical user interface (GUI) of the MA SYE, and logistics for implementation and use of the Microsoft Access database application. It does not include step-by-step details on how to use the program because onscreen help features within the GUI provide this information so that users can learn the software as they navigate the interface.

Analytical Methods

Version 2.0 (v2.0) of the MA SYE uses analytical methods that were developed and used for the original Massachusetts Sustainable-Yield Estimator (MA SYE version 1.0) (Archfield and others, 2010) and the Rhode Island hydrologic drought decision support system (HyDroDSS version 1.0) (Granato, 2014). The application of these methods for the MA SYE v2.0 is described in more detail by Levin and Granato (2018). The MA SYE calculates percentiles of daily mean flow by using regression on basin characteristics; distributes these percentiles of daily mean flow over a long-term time series by using an index-streamgage record; calculates available yields of daily mean streamflow by using user-defined flow targets; calculates water-use-adjusted values of daily mean streamflow by using water-use data; calculates estimates of the accuracy and uncertainty of estimated unaltered streamflow; and calculates selected streamflow statistics by using standard statistical methods. These methods are described in detail by Archfield and others (2010), Granato (2009, 2014), Granato and others (2017), Granato and Levin (2018), Farmer and Levin (2018), and Levin and Granato (2018). These methods also are described within the explanations and context-sensitive help available within the MA SYE GUI.

The Graphical User Interface

The GUI has 15 forms. A form is a window that appears within the Microsoft Access database GUI and consists of text and controls, such as text boxes, buttons, and pull-down menus (known as combo-boxes), that provide the means for entering or importing data, calculating streamflow and streamflow statistics, and exporting results. The GUI includes an opening-screen form, an instruction form, a main-menu

form, six user-input forms, two forms to track the progress of lengthy calculations, two output-graphing forms, a text output form, and a file-specification form. The opening screen displays the agency logos while the application loads. The instruction form provides information about the program and its use. The main menu appears once the user continues beyond the instruction form. The main-menu form has a series of buttons on the left that provide information about the application and a series of action buttons on the right to carry out an analysis or to exit the application. After the main menu, the user proceeds through the input forms to define an analysis in the following order (fig. 1):

1. Analysis-definition form (Analysis input)—input descriptive information about the simulation.
2. Input basin characteristics form (Site input)—input or import basin characteristics for the site of interest generated by using StreamStats, for the site of interest.
3. Index-streamgage selection form (Streamgage selection)—view information about the computer-selected index streamgage, or select a different index streamgage.
4. Flow-targets form (Flow-target selection)—user can select or define new streamflow targets.
5. Water-use volumes form (Water-use input)—import monthly water-use information from StreamStats or user-created file.
6. Streamflow-estimator calculation and output form (Flow calculation and Output selection)—select the desired output metrics, calculate statistics and uncertainty multipliers, and select the desired format.

To use this computer program, click through the user interface and enter (or import) the required information on each form. The flowchart (fig. 1), which is available within

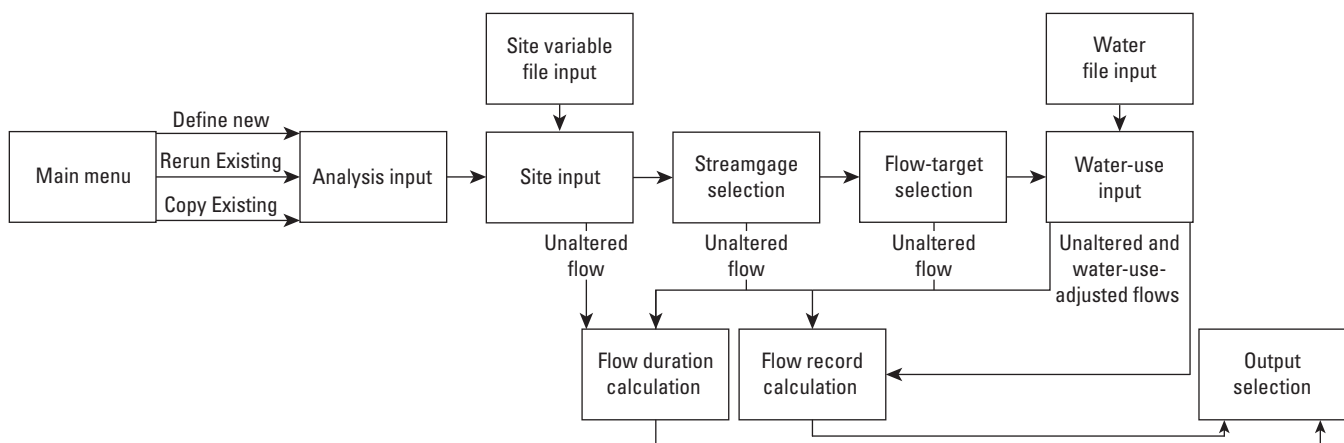


Figure 1. Sequence for navigating through the graphical user interface of the Massachusetts Sustainable-Yield Estimator (version 2.0) to import data, specify flow targets, and calculate flow durations, flow records, yields, and output statistics for unaltered flow and water-use-adjusted streamflows.

the GUI, shows the order of operations rather than the actual forms. To use the application, start at the main menu and proceed through the forms to define an analysis, input the properties of the site of interest, select an index streamgauge, specify flow targets, input water-use information, calculate unaltered and water-use-adjusted flows, and output various statistics. As the flowchart indicates, flow durations can be calculated from each form after the properties of the site of interest have been defined. A flow-record time series can be calculated once an index streamgauge has been selected, and water-use-adjusted flows can be calculated once the water-use information has been imported. After the unaltered or water-use-adjusted flows are calculated, the resulting flow statistics can be output in various formats from the final form.

The program provides four opportunities to calculate output streamflows (fig. 1). Some of these options bypass subsequent data-input forms and can be used to quickly evaluate scenarios without requiring the full sustainable-yield computations. These options are the following:

1. **View Unaltered Flow Durations**—This button on the input basin characteristics form allows the user to view the flow-duration curve for estimated daily unaltered flow (estimated streamflows in the absence of water-use effects and flow regulation) and evaluate the potential effect of basin characteristics on estimated streamflow values without proceeding through the other input forms, which can take several minutes. The option to calculate estimated flow durations from this form may be especially important if the values of one or more properties of the selected basin are outside the ranges used to develop the regression equations.
2. **View Unaltered Streamflows**—This button on the index-streamgauge selection form provides the opportunity to quickly evaluate the potential effect of the index-streamgauge selection on the time series of estimated flow values (estimated streamflows in the absence of water-use effects) without having to enter or select flow targets, import water-use data, and calculate the water-use alterations.
3. **View Target Flows**—This button on the flow-targets form provides the opportunity to quickly evaluate the potential effect of the selected flow targets on the calculated basin yields without having to import water-use data and calculate the water-use alterations.
4. **Calculate Adjusted Streamflows**—This button on the water-use volume input form allows users to view and compare estimated unaltered, water-use-adjusted, and target streamflows.

Detailed information on the individual controls on a form is available as text on the form, in the explanations for each form, and in the context-sensitive help buttons associated with the individual controls on each form (fig. 2). The “Explanation” button on each form provides relevant information

about the form. The “?” buttons next to each input field or button provide additional, context-sensitive help. Each object also has status bar and tool-tip text explanations. The status bar text explanations appear in the lower left corner of the database window. The tool-tip text explanations appear if the mouse cursor is held over the object without clicking on it. The GUI is designed to provide visual cues that facilitate its use. Related form controls are grouped within rectangles. For example, the navigation menu, used to proceed from form to form through the application, is on the bottom of each form and consists of buttons surrounded by a green rectangle (fig. 2). Related controls also are grouped by tabbed pages on some forms; the controls appear when the tab is clicked on.

Program Inputs

The application has four sets of inputs (fig. 1). The analysis information, which is used to name and document each MA SYE analysis, is manually entered on the analysis-definition input form. The basin characteristics (table 1), which are used in the regression equations to calculate the unaltered flows, can be entered on the basin-characteristics input form or imported from a tab-delimited text or comma-separated values (CSV) file by using the input option on this form. The flow-targets, which are used to calculate the streamflow yields, are manually entered on the flow-targets form. The monthly-flow targets can be entered as flow thresholds or a percentage of the unaltered flow. Once a set of flow targets has been defined, it can be selected for all subsequent analyses. The water-use data, which are used to calculate the water-use-adjusted streamflows, are imported from a tab-delimited text or CSV input file on the water-use volume input form. Water-use data are imported rather than manually entered because the water-use datasets are large and complex, and the manual-entry process is prone to data-entry errors.

The basin characteristics and water-use data are obtained from the StreamStats interface described by Ries and others (2017). The basin characteristics can be obtained as follows:

1. Open StreamStats, which is currently (2018) available at <https://streamstats.usgs.gov/ss/>.
2. Navigate to the point of interest by clicking or zooming within the map, or by entering latitude and longitude coordinates or a geographic place name on the left menu. If the place-name option is used, StreamStats will provide autocomplete options as the local place name is entered. If the correct autocomplete option appears, click on the name to zoom to the desired location.
3. Select the “Massachusetts” State study area on the left menu.
4. Zoom in to level 15, at which the stream-centerline pixels are visible.

4 User Guide for the Massachusetts Sustainable-Yield Estimator (MA SYE—Version 2.0)

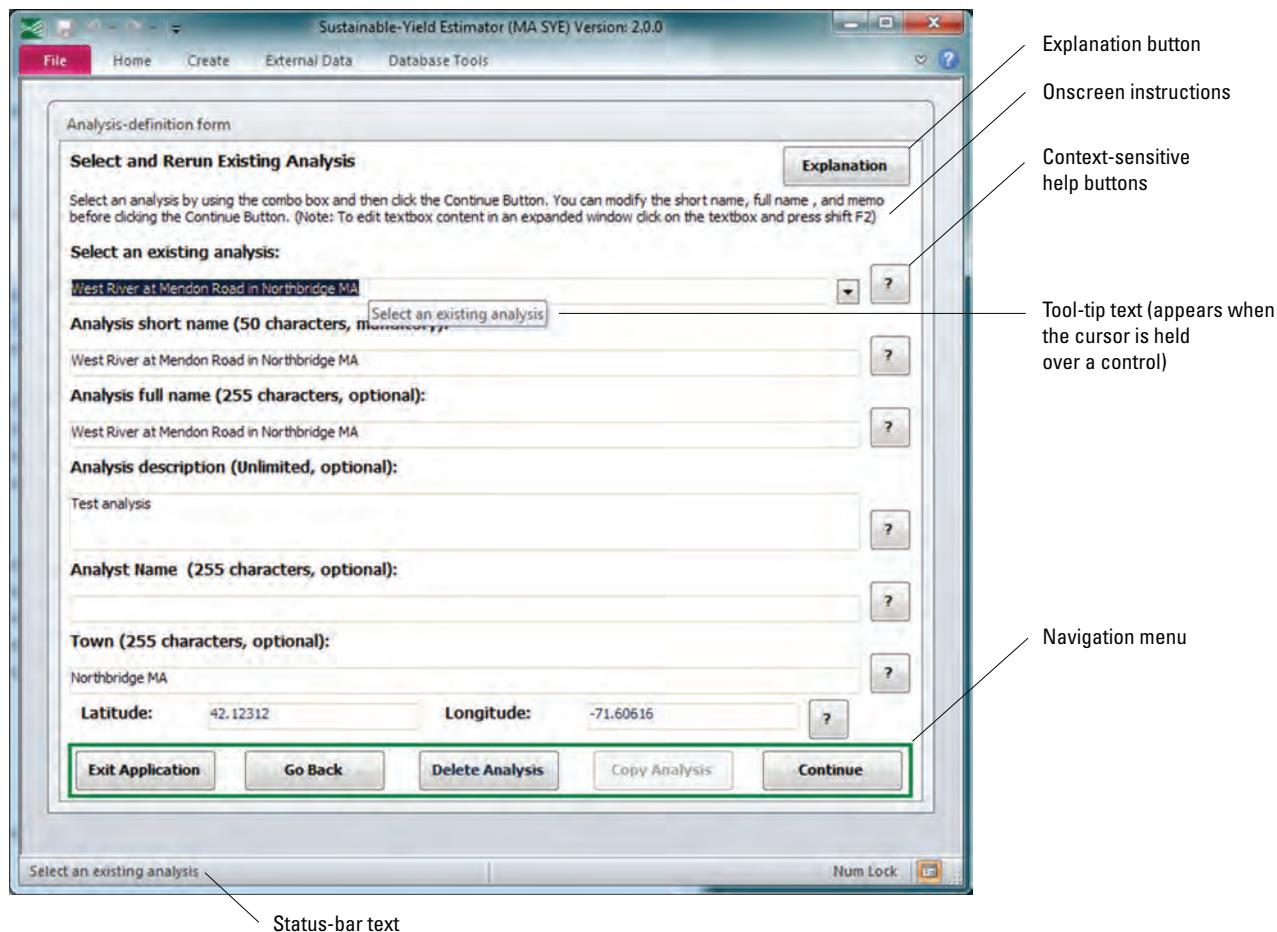


Figure 2. The detailed information available to the user on an example form within the Massachusetts Sustainable-Yield Estimator, version 2.0.

5. Click the “Delineate” button on the left menu and then click on a stream-centerline pixel.
6. Once the basin is properly delineated, click the “Continue” button on the left menu, and select the “Basin Characteristics” pull-down arrow to open the basin characteristics menu.
7. Click the “Select All Basin Characteristics” button on the left menu and then scroll down and click the “Continue” button. (When the basin characteristics are later imported into the MA SYE, the application will filter the output file for the necessary basin-property variables.)
8. Once StreamStats has calculated the basin characteristics, click the “Continue” button below “Basin Characteristics Report” to launch the report window.
9. Once the report window appears in StreamStats, scroll to the bottom and click the “Download CSV” button, which will save a file named “data.csv” to the user’s downloads folder. Rename the file and move it to the user-generated

MA SYE analysis folder by using the Microsoft Windows GUI. Use the MA SYE application to open the file from either folder. However, moving and renaming the file prevents it from being overwritten in a future StreamStats session.

The water-use data can be obtained from StreamStats as follows:

10. From step 9, click on the “Identify a Study Area” banner on the left menu, then click the “Check For Water Use” button. Using the default dates, click the “Get Water Use” button on the pop-up window.
11. Click the “Water Use Table” tab on the pop-up “Study Area Water Use Summary” window.
12. Click the “Download” button on this tab and select the “Source CSV” option. This will save a “wateruseSummaryBySource.csv” file, which can be imported into the MA SYE application by using the water-use volumes form (fig. 1). If the “Table CSV” option is selected in StreamStats, then the “wateruseSummary.csv” file is

Table 1. Summary of basin-property variables for input into the Massachusetts Sustainable-Yield Estimator, version 2.0.

Variable	StreamStats abbreviation	Description	Unit
Hydrologic variables			
Drainage area	DRNAREA	Area that drains to a point on a stream	Square miles
Average annual precipitation	PRECPRIS00	Basin-average mean annual precipitation for 1971 to 2000 from PRISM Group (2012)	Inches
Mean basin elevation	ELEV	Mean basin elevation	Feet
Percent of basin that is sand and gravel deposits	CRSDFT	Percentage of area of coarse-grained stratified drift	Percent
Percent of basin that is wetlands	WETLAND	Percentage of wetlands	Percent
Percent of basin that is open water	LAKEAREA	Percentage of lakes and ponds	Percent
Average maximum monthly temperature	MAXTEMPC	Mean annual maximum air temperature over basin area	Degrees Celsius
Location variables			
X-location at the outlet of the basin	OUTLETX	Basin outlet horizontal (x) location in State Plane coordinates	Meters
Y-location at the outlet of the basin	OUTLETY	Basin outlet vertical (y) location in State Plane coordinates	Meters
X-location at the center of the basin	CENTROIDX	Basin centroid horizontal (x) location in State Plane coordinates	Meters
Y-location at the center of the basin	CENTROIDY	Basin centroid vertical (y) location in State Plane coordinates	Meters

downloaded instead; this file does not include the data that are used for the MA SYE analysis, and it will not be read properly.

Detailed directions for importing these files also are available on the input basin characteristics (Site input) and Water-use volumes (Water-use input) forms (fig. 1) within the MA SYE.

Program Outputs

The application produces tables of daily mean flows, 7-day low flows, and monthly flows (table 2). Outputs are viewed or exported by using the output-selection forms (fig. 1). The estimated record of daily flows and daily-flow statistics can be examined and exported in text files, an Access-query format, or graphs. Outputs in the Access-query format and the graphs can be viewed within the application or exported. The text files of daily-flow values must be exported because they are too long to be viewed within the GUI. The 7-day low flows and estimates of the 7-day 10-year low flow,

which is the 7-day low flow with a 10 percent chance of being equal to or less than the given value in any given year, can be examined and exported in a text-file format. Monthly-flow statistics can be examined and exported in a text-file format. By default, all these text-file outputs echo all the application inputs, unless the user decides to deselect the option to export the input values. Uncertainty multipliers (Farmer and Levin, 2018; Levin and Granato, 2018) also can be examined and

Table 2. Summary of options for data output from the Massachusetts Sustainable-Yield Estimator, version 2.0.

Flow category	Output			
	Flow durations	Time series	Statistics	Uncertainty
Daily flows	Yes	Yes	Yes	Yes
7-day low flows	No	Yes	Yes	No
Monthly flows	No	No	Yes	Yes

exported in a text-file format. With the exception of the daily flows, all the text-file outputs can be copied as text from the output form or saved in text-file format from the output form.

The output files are written as tab-delimited ASCII text files that can be imported into many software packages. This file format begins with comment lines that describe the content of the file, the analysis-specification options, and the output-value columns. A pound symbol (#) in the first character location of each line denotes these comment lines. The comments are followed by a line that lists a variable name for each type of output value in the file. These lines of comments and variable names document program outputs in a meaningful and efficient format. The remaining output lines in the text files contain the numerical results of the analysis. The tab-delimited format of the numerical-result output tables is designed to be copied and pasted into spreadsheet programs, graphing packages, statistical software, and word-processing tables. This output is designed to facilitate postmodeling analysis and presentation of results.

The Microsoft Access Database Application

The MA SYE v2.0 is a database application with a graphical user interface (GUI) developed by using Visual Basic for Applications (VBA) with the 32-bit version of Microsoft Access. The MA SYE was developed as a database application because this type of application can store input analyses to facilitate repeatability of results, scenario testing, and sensitivity analyses (Granato, 2013, 2014). A database application can be deployed and used in several ways. The MA SYE is available as an uncompiled database file (MA-SYE-V2.0.0.accdb), a compiled database file for future modification and use (MA-SYE-V2.0.0.accde), and a compiled-database installation file (MA-SYE-V2.0.0.exe). The uncompiled database file allows for user customization and future upgrades. The compiled database file provides a standard version of the application with stable VBA object-library references that runs faster than the uncompiled version. The compiled-database installation file provides a standard version of the application that runs in a controlled environment. This installed version will work on systems without compatible versions of the Microsoft Office software. To install the compiled version of the MA SYE v2.0, copy the database installation file (MA-SYE-V2.0.0.exe) to the user's computer and run the installation file, which uses standard Microsoft conventions for software installation. Administrative privileges are required for the installation. The MA SYE database files are available, along with the installation file and a data dictionary, on the USGS ScienceBase website (Granato and Levin, 2018).

The MA SYE v2.0 was developed by using the 32-bit version of Microsoft Office because this version is the default and recommended version of Office for installation and use by most users (Microsoft Corporation, 2016, 2018; 404 Tech

Support Inc, 2017). Microsoft recommends the use of the 32-bit version of Office and has set that version as the default installation so that most users will have files and applications that are compatible with other Office users and third-party applications. Microsoft states that only a very few advanced users with extremely large file sizes would need a 64-bit version of Office (Microsoft Corporation, 2016, 2018; 404 Tech Support Inc, 2017). If a user must have a 64-bit version of the MA SYE, then they may use the decompiled version of the 32-bit database (MA-SYE-V2.0.0.accdb) to compile a 64-bit version. To do this, copy the application to a 64-bit version of Microsoft Access, compact and repair the database, and then compile the code to catch any errors or broken references. Once the conversion issues are resolved, recompile the database for daily use. Keep an uncompiled 64-bit version for future updates.

References Cited

- 404 Tech Support Inc, 2017, 32-bit Office is still recommended for 64-bit Windows: 404 Tech Support web page, accessed May 5, 2018, at <https://www.404techsupport.com/2017/01/16/32bit-office-64bit-windows/>.
- Archfield, S.A., Vogel, R.M., Steeves, P.A., Brandt, S.L., Weiskel, P.K., and Garabedian, S.P., 2010, The Massachusetts Sustainable-Yield Estimator—A decision-support tool to assess water availability at ungaged stream locations in Massachusetts: U.S. Geological Survey Scientific Investigations Report 2009–5227, 41 p. plus CD-ROM. [Also available at <https://pubs.usgs.gov/of/2008/1362/>.]
- Barnwell, T.O., Jr., and Krenkel, P.A., 1982, Use of water quality models in management decision making: *Water Science and Technology*, v. 14, no. 9–11, p. 1095–1107.
- Farmer, W.H. and Levin, S.B., 2018, Characterizing uncertainty in daily streamflow estimates at ungauged locations for the Massachusetts Sustainable Yield Estimator: *Journal of the American Water Resources Association*, v. 54, no. 1, p. 198–210, accessed February 2018 at <https://doi.org/10.1111/1752-1688.12603>.
- Granato, G.E., 2009, Computer programs for obtaining and analyzing daily mean streamflow data from the U.S. Geological Survey National Water Information System web site: U.S. Geological Survey Open-File Report 2008–1362, 123 p. on CD-ROM. [Also available at <https://pubs.er.usgs.gov/publication/tm4C3>.]
- Granato, G.E., 2013, Stochastic empirical loading and dilution model (SELDM) version 1.0.0: U.S. Geological Survey Techniques and Methods, book 4, chap. C3, 112 p. on CD-ROM. [Also available at <https://pubs.usgs.gov/tm/04/c03/>.]

- Granato, G.E., 2014, Hydrologic Drought Decision Support System (HyDroDSS): U.S. Geological Survey Open-File Report 2014–1003, 91 p., with CD–ROM, accessed March 2014 at <http://dx.doi.org/10.3133/ofr20141003>.
- Granato, G.E., and Levin, S.B., 2018, Massachusetts Sustainable-Yield Estimator (MA SYE) application software (ver. 2.0, November 2018): U.S. Geological Survey software release, <https://doi.org/10.5066/P95VX5AX>.
- Granato G.E., Ries, K.G., III, and Steeves, P.A., 2017, Compilation of streamflow statistics calculated from daily mean streamflow data collected during water years 1901–2015 for selected U.S. Geological Survey streamgages: U.S. Geological Survey Open-File Report 2017–1108, 17 p., accessed October 2017 at <https://doi.org/10.3133/ofr20171108>.
- Levin, S.B., and Granato, G.E., 2018, Methods used to estimate daily streamflow and water availability in the Massachusetts Sustainable-Yield Estimator version 2.0: U.S. Geological Survey Scientific Investigations Report 2018–5146, 16 p., <https://doi.org/10.3133/sir20185146>.
- Microsoft Corporation, 2016, 64-bit editions of Office 2013: Microsoft Corporation web page, accessed December 16, 2017, at [https://docs.microsoft.com/en-us/previous-versions/office/office-2013-resource-kit/ee681792\(v=office.15\)](https://docs.microsoft.com/en-us/previous-versions/office/office-2013-resource-kit/ee681792(v=office.15)).
- Microsoft Corporation, 2018, Choose between the 64-bit or 32-bit version of Office: Microsoft Corporation web page, accessed May 5, 2018, at <https://support.office.com/en-us/article/choose-between-the-64-bit-or-32-bit-version-of-office-2dee7807-8f95-4d0c-b5fe-6c6f49b8d261>.
- PRISM Group, 2012, United States average monthly or annual precipitation, 1981–2010, 30 arc-second normal, created July 10, 2012: Corvallis, Oreg., Oregon State University, accessed March 20, 2017, at <http://www.prism.oregonstate.edu/>.
- Ries, K.G., III, Newson J.K., Smith, M.J., Guthrie, J.D., Steeves, P.A., Haluska, T.L., Kolb, K.R., Thompson, R.F., Santoro, R.D., and Vraga, H.W., 2017, StreamStats, version 4: U.S. Geological Survey Fact Sheet 2017–3046, 4 p. [Also available at <https://doi.org/10.3133/fs20173046>. Supersedes USGS Fact Sheet 2008–3067.]

For more information about this report, contact:
Director, New England Water Science Center
U.S. Geological Survey
10 Bearfoot Road
Northborough, MA 01532
dc_nweng@usgs.gov
or visit our website at
<https://newengland.water.usgs.gov>

Publishing support provided by the Pembroke Publishing
Service Center

